



FAST-FOLD® TRUSS FRAME SCREENS

Large Heavy-duty Portable Screens

DA-LITE SCREEN COMPANY, INC.
 3100 North Detroit Street
 Post Office Box 137
 Warsaw, Indiana 46581-0137
 Phone: 574/267-8101
 800-622-3737
 Fax: 574/267-7804
 http:// www.da-lite.com
 e-mail: info@da-lite.com

SPECIFICATION DATA

SUGGESTED SPECIFICATIONS: _____ projection screens, _____ (H) x _____ (W), portable type. To have flexible screen surface choice of Da-Mat, Pearlescent, Da-Tex (rear), Cinema Vision or Dual Vision. All screen surfaces are fire and mildew resistant. Screen surface will have reinforced black webbing on all four sides and will attach to front of frame with metal snaps. Frame to consist of 1" square aluminum tubing, heliarc welded to form a 6" x 1" truss member. Members are joined with a piano hinge to allow for folding. 6" truss legs with anti-sway braces support the truss frame. Larger frames have additional bracing members for extra rigidity and long life. Frame is clear etched and anodized to be brushed and burr free. All steel hardware is plated. Inverted Truss legs support the screen and allow height adjustments up or down in 6" increments. Includes wheeled polyethylene carrying cases. Polyethylene carrying cases meet or exceed Air Transport Association (ATA) Specification 300 standards.

DIMENSIONS Complete Screen

Overall Size		Net Picture Area		Approx. Ship. Wt.	
H x W	M.	H x W	M.	Lbs.	Kg
7' x 9'	2.13 x 2.74	6' x 8'	1.83 x 2.44	112	50.80
8'6" x 11'	2.59 x 3.35	7'6" x 10'	2.29 x 3.05	149	67.59
11' x 11'	3.35 x 3.35	10' x 10'	3.05 x 3.05	151	68.49
10' x 13'	3.05 x 3.96	9' x 12'	2.74 x 3.66	157	71.22
13' x 13'	3.96 x 3.96	12' x 12'	3.66 x 3.66	160	72.58
11'6" x 15'	3.51 x 4.57	10'6" x 14'	3.20 x 4.27	176	79.83
10' x 17'	3.05 x 5.18	9' x 16'	2.74 x 4.88	169	76.66
11' x 19'	3.35 x 5.79	10' x 18'	3.05 x 5.49	187	84.82
12'3" x 21'	3.73 x 6.40	11'3" x 20'	3.43 x 6.10	202	91.63
9' x 25'	2.74 x 7.62	8' x 24'	2.44 x 7.32	210	95.26
13' x 17'	3.96 x 5.18	12' x 16'	3.66 x 4.88	188	85.28
14'6" x 25'	4.42 x 7.62	13'6" x 24'	4.04 x 7.32	249	112.95
16' x 21'	4.88 x 6.40	15' x 20'	4.57 x 6.10	225	102.06
19' x 25'	5.79 x 7.62	18' x 24'	5.49 x 7.32	304	137.89

PLEASE MARK APPROPRIATE SELECTIONS:

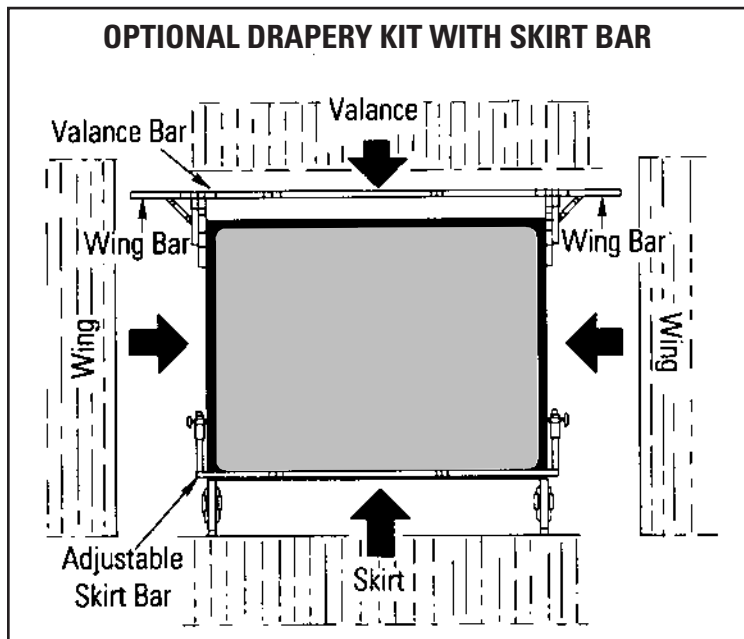
Select size from chart

Select viewing surface for Complete Screen:

- Da-Mat
 Pearlescent
 Cinema Vision
 Da-Tex (rear)
 Dual Vision

Options:

- Drapery Presentation Kit-with or without adjustable skirt bar (black, blue or gray)
 Replacement Surface Only
 Da-Mat
 Pearlescent
 Cinema Vision
 Da-Tex (rear)
 Dual Vision



Project: _____

Phone: _____

Contractor: _____

Phone: _____

Supervisor: _____

Phone: _____

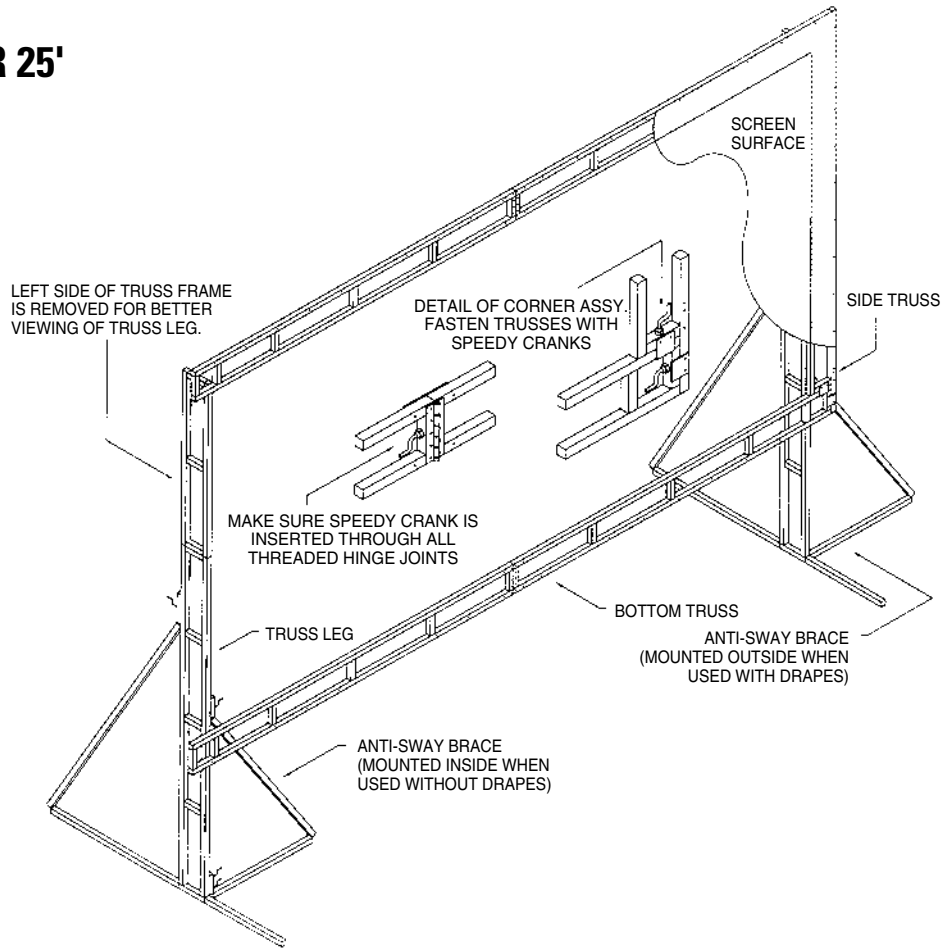
Supplier: _____

Date: _____

Revised: _____

FAST-FOLD® TRUSS FRAME SCREENS

UNDER 25'



25' AND WIDER

